

The Norwegian Farmers Union

- a brief presentation

NORGES BONDELAG



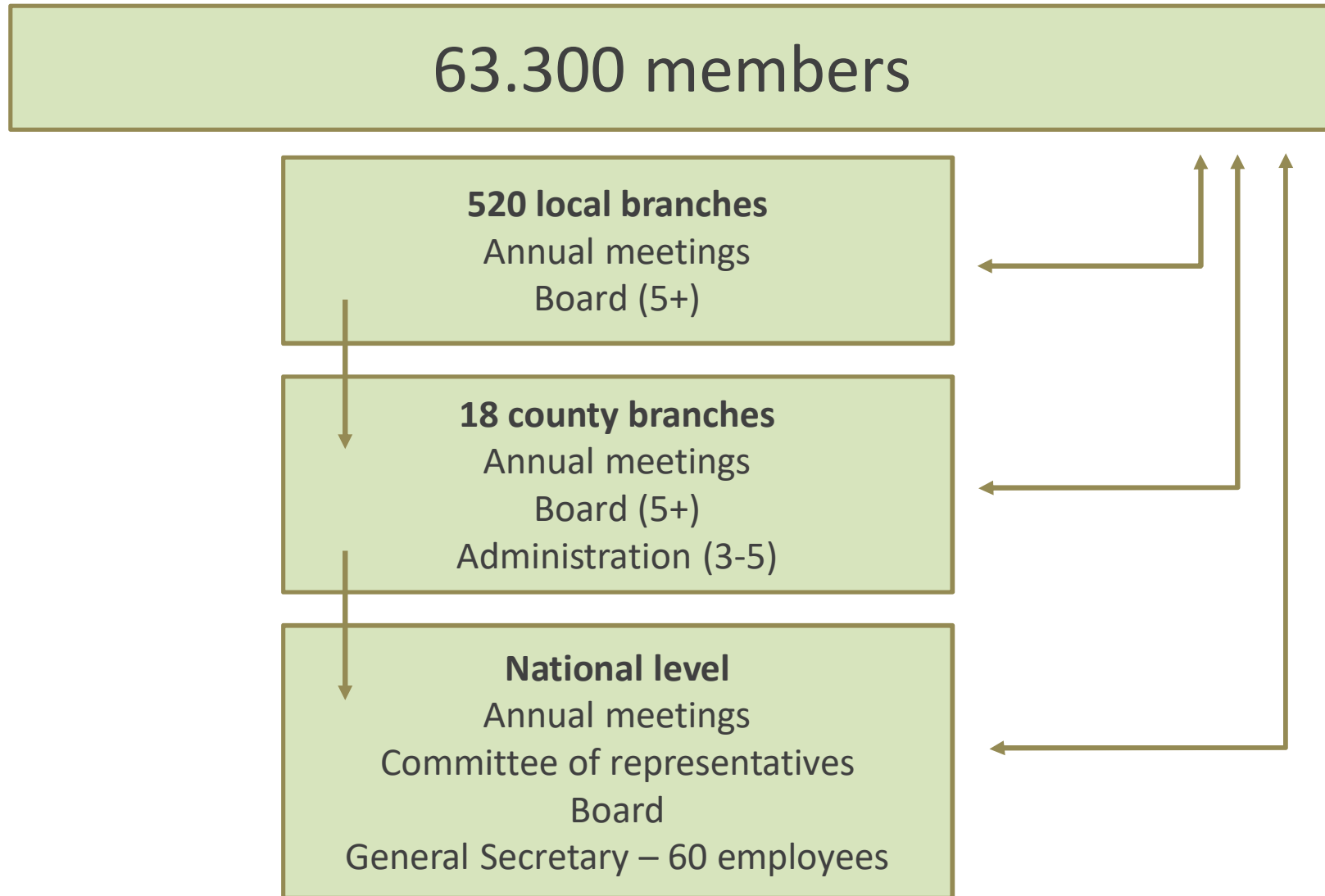


About the NFU

- Largest farmers`organization – established in 1896
- 63.300 members - direct membership
- 60% of the about 41 000 farmers are members
- Our main aim is to **improve conditions** in agriculture, and show how important agriculture is for the community
- Open membership – financed by members
- Recognized by the Government as one official party in annual negotiations



Organizational structure





What do we do?

- Work directed towards
 - members
 - national politicians
 - annual negotiations (subsidies and target prices)
 - the private business sector
 - media
- Service and assistance for members
- Proactive in focusing on agriculture in the media – i.e. “Open Farms”, “The Green School”
- Total staff of approx. 60





Membership benefits

- Agricultural policy-making, framework, legislation, regulations
- Individual help and support - covered by membership fee
- Socio-vocational environment locally
- Local interest organization and pressure groups
- Membership fee: average of 2.500 NOK average





More benefits...

- Farmers Weekly / *Bondebladet*
- Insurance
- Accounting services
- Legal assistance
- Climate adjustment counselling
- Discount prices through purchasing co-ops (fuel/energy, telecommunication, cars etc.)
- Health-Safety-Environment (HSE)
- Publishing company
- Self-study groups



Frameworks and farming policies

NORGES BONDELAG



Our objectives

- To secure the overall *framework* for farm based activities for our members
- To ensure sufficient *income* in farming to create and maintain attractive jobs and business development in agriculture
- To ensure *local ownership and local control* of resources
- To develop an active policy for maintaining a *decentralised* population and employment opportunities in rural areas.



Main policy set in negotiations

- Annual negotiations between the state and the two farmers organisations about subsidies and target prices
- Lead by ministry of AG
- Approved by Parliament
- Broad political consensus on system and policy – now?





International activities

International interest-organisations

- World Farmers` Organization
- COPA (EU-farmers` organizations) (partner)
- NBC (Nordic Farmers` Central Org.)

Relations to the EU

- Non-members
- EEA-agreement: Agriculture outside but still affected through trade paragraphs and food and veterinary regulations

Trade

- EU: Specific agreements through EEA
- WTO
- EFTA – 27 agreements – Mercosur ongoing
- Every country`s right to produce food

Development work

- Supports The Development Fund`s project in Malawi

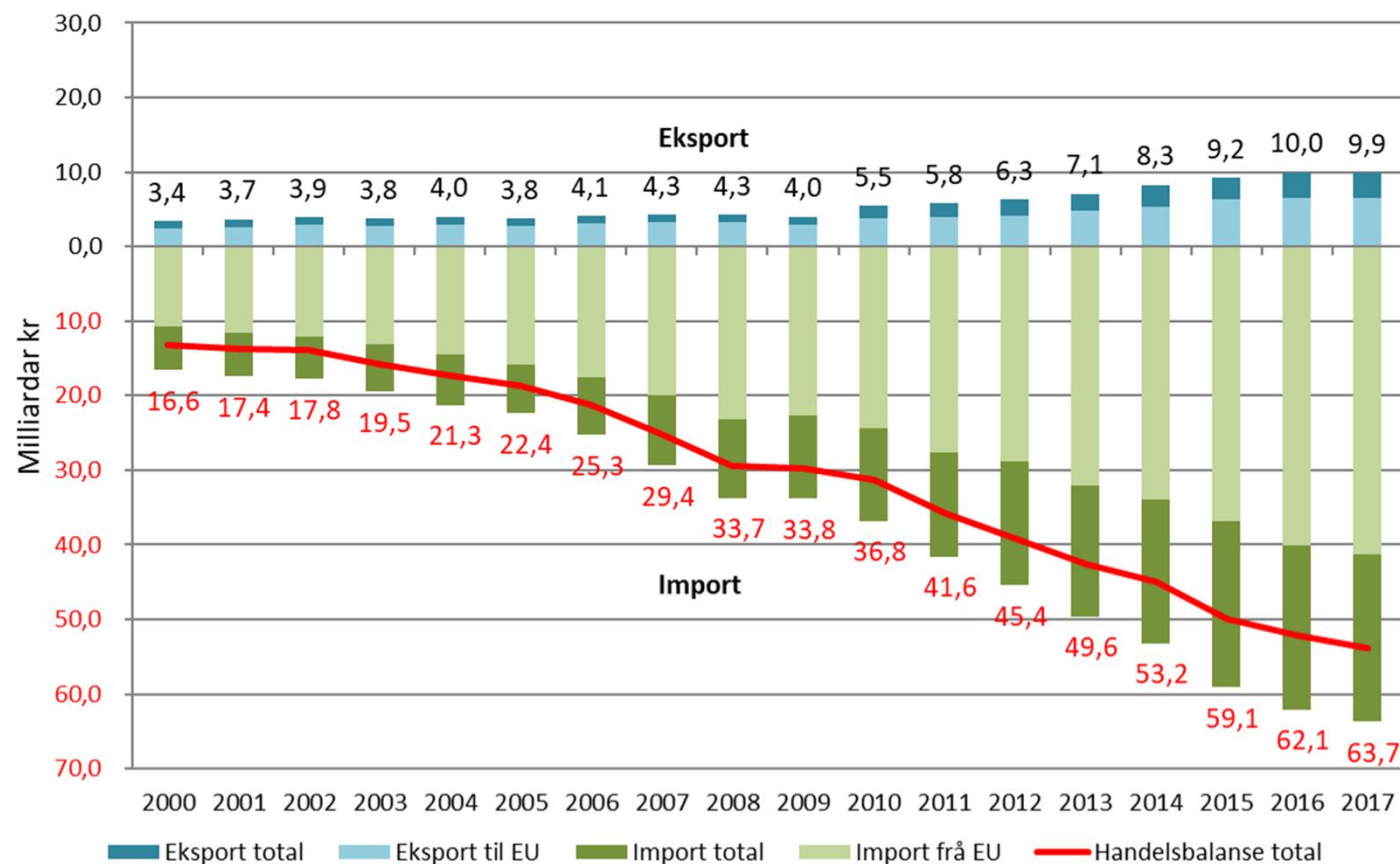


Outside EU customs union

- Bilateral deals with EU
 - 65% of imports from EU
 - Imports from EU doubled last ten years
 - 13% of Norwegian cheese consumption
- WTO (also subsidies)
- EFTA agreements
 - Mercosur

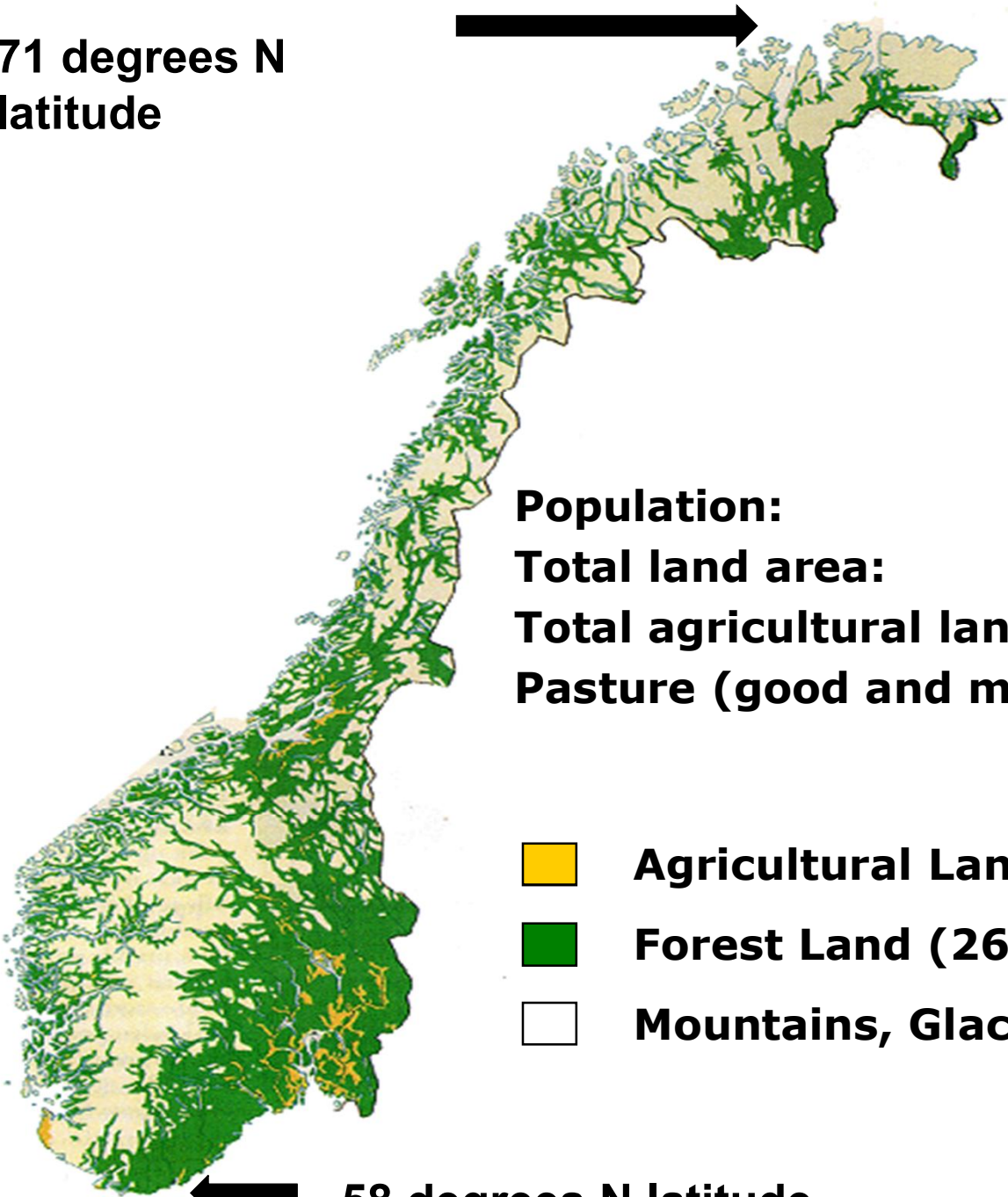


Developments in Norwegian agricultural trade






AgriAnalyse/Landbruksdirektoratet/SSB

**71 degrees N
latitude**



Population: 5,2 million people
Total land area: 325.000 Km²
Total agricultural land: 3 % (1 mill ha)
Pasture (good and medium quality): 52 %

-  **Agricultural Land (3 % of total area)**
-  **Forest Land (26 % of total area)**
-  **Mountains, Glaciers etc**

58 degrees N latitude

The Norwegian Model

Property
regulation

Import regulation

Annual
negotiations about
subsidies and
prices

Market regulation
by farmer coops

NFUs views

- Essential to keep the Norwegian model:
 - Import regulation, market regulation, property rights and annual negotiations
- Need well financed and tailor made tools
- Only possible outside the EU
- Challenges
 - Changing political support
 - Growing imports – new deals – no bargaining chip

Politics matters

Värmland, Sweden



Østfold, Norway





www.bondelaget.no
#norgetrengerbonden

